

CONVENTION CITY: A HISTORIC WASHINGTON, DC, WALKING TOUR

DIVERSION

WWW.DIVERSION.COM FOR PHYSICIANS AT LEISURE | APRIL 2008

NEW!
EXPANDED
MEETING
COVERAGE
INSIDE

16 Travel Myths
Bite the Dust
RULES OF THE ROAD REVEALED

It's Spring!

5 EASY WEEKEND Getaways

COOL CITIES • QUAIN TOWNS • GARDENS • INNS • MORE

PERRI
KLASS, M.D.
**WHEN
DOCS
MARRY
DOCS**

BEYOND
PUBS & PINTS

CELTIC CHIC

An insider's Ireland update

**WE RATE THE TOP
MIDSIZE SEDANS**

116 CME MEETINGS

July through November

JAPANESE GARDEN, PORTLAND, OREGON

Portland | OREGON

RAIN OR SHINE, PORTLAND SPARKLES. Cradled between the Willamette and Columbia rivers about 175 miles south of Seattle, this scenic city of 2 million is clean, green and captivating. Yes, it gets wet, but the drizzly days usually diminish by April. Besides, Portland can dazzle indoors as well as out, with world-class restaurants, welcoming brewpubs and more. travelportland.com.

do Terraced into the hills with views of downtown and Mount Hood, the acclaimed **Portland Japanese Garden** weaves stone, water, trees and flowers into a tranquil retreat. Go early—this place is popular, especially in spring, when the cherry trees, azaleas and wisteria bloom. Stroll the winding paths throughout the adjacent **International Rose Test Garden**, where more than 6,000 rosebushes show their colors between May and June. The **Oregon Zoo** is also nearby.

Compact and crisscrossed by trails and mass transit, central Portland is exceptionally easy to explore. You can ride buses, trains and trolleys gratis within a 300-block area. Pick up a free walking map from **Powell's City of Books**, the immense independent bookstore in the hip **Pearl District** that's a sight unto itself. Visit the **Portland Classical Chinese Garden**, a former parking lot transformed into a soothing oasis. Hike and bike along the Willamette in **Governor Tom McCall Waterfront Park** and cruise the crafts at the

DETAILS

➤ **Hotel deLuxe**
800/895-2094
hoteldeluxeportland.com
From \$169

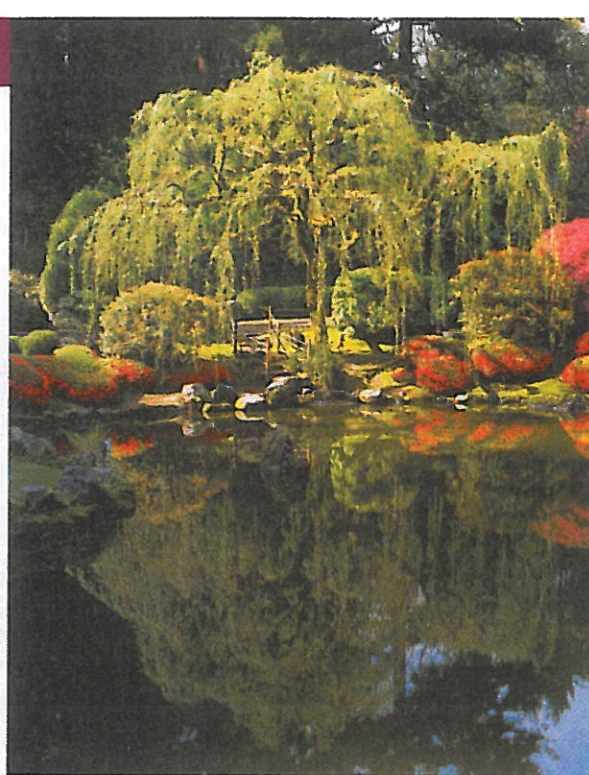
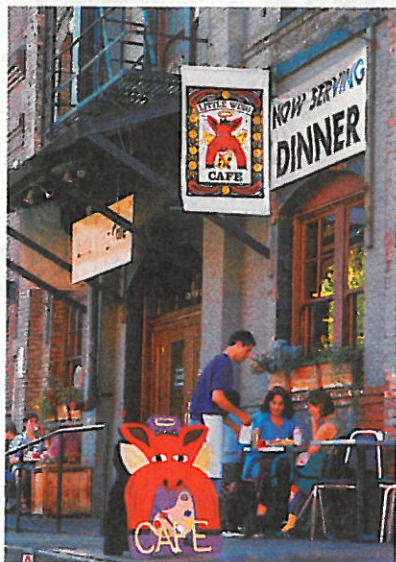
➤ **RiverPlace Hotel**
600/227-1333
riverplacehotel.com
From \$239

➤ **Dan & Louis Oyster Bar**
503/227-5906
danandlouis.com

➤ **Higgins Restaurant and Bar**
503/222-9070
higgins.ypguides.net

➤ **Paley's Place**
503/243-2403
paleysplace.net

➤ **Silk Vietnamese Restaurant & Bar**
503/248-2172
silkbphovan.com



GREEN SCENE

The serenely beautiful Japanese Garden. Below: Wahkeenah Falls and footbridge in the Columbia River Gorge and the city's happening Pearl District.

Portland Saturday Market under the Burnside Bridge. Go west to the **Portland Art Museum** for the Native American collection; the **Portland Farmers Market** nearby is open on Saturdays.

SIDE TRIP: The **Columbia River Gorge** is less than 30 miles east. The Historic Columbia River Highway, built in 1922, twists around amazing vistas and multiple waterfalls; take Interstate 84 back to the city.



eat Thanks to its peerless produce and seafood, Portland's restaurant scene sizzles. Sample the briny local oysters and chilled microbrews at **Dan & Louis Oyster Bar**, an atmospheric 101-year-old establishment. Feast on delicious Vietnamese dishes at **Silk Vietnamese Restaurant & Bar**, a chic Pearl District café. For a big night out, make reservations at **Higgins Restaurant and Bar** or **Paley's Place**, where the homemade prosciutto is scrumptious.

stay Jog out the main entrance to the riverfront trails at **RiverPlace Hotel**, overlooking the Willamette. Closer to the Pearl District, the **Hotel deLuxe** is an Art Deco charmer with spacious rooms and an Old Hollywood theme.

FROM TOP: CHARLES A. BLAKESLEE/AGE FOTOSTOCK; RUSS BISHOP/STOCK CONNECTION; DANITA DELMONT/ALAMY; OPENING PAGES: CLOCKWISE FROM LEFT: MICHAEL P. GADOMSKI/SUPERSTOCK; TRAVEL PORTLAND/MR. JANIS MIGLAYS; KIM KARPELES/ALAMY; LYNN SELDON; ANDY JACKSON/ALAMY